

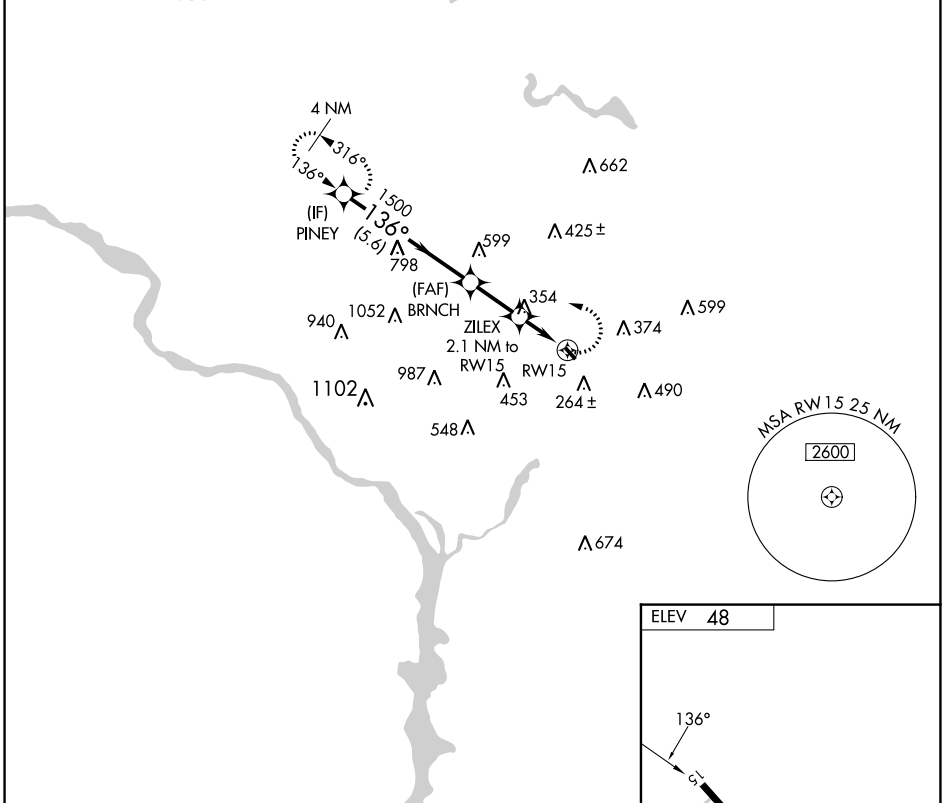
APP CRS 136°	Rwy Idg TDZE Apt Elev	N/A N/A 48
------------------------	-----------------------------	---------------------------------------

RNAV (GPS)-A
COLLEGE PARK (CGS)

▽	DME/DME RNP-0.3 NA.	MISSED APPROACH: Climbing left turn to 2100 direct PINEY and hold.
----------	---------------------	--

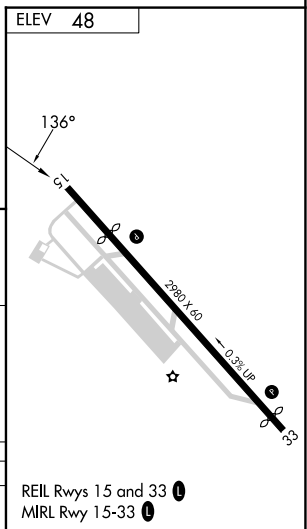
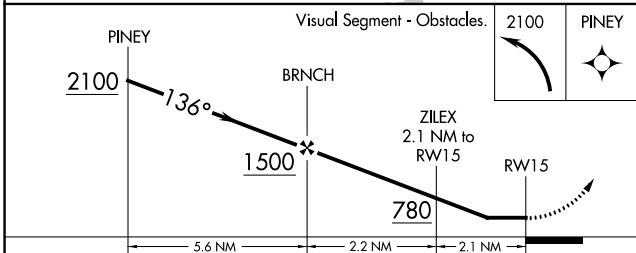
AWOS-3 121.225	POTOMAC APP CON 125.65 348.725	UNICOM 122.975 (CTAF) ①
--------------------------	--	-----------------------------------

RADAR REQUIRED



NE-3, 18 APR 2024 to 16 MAY 2024

NE-3, 18 APR 2024 to 16 MAY 2024



CATEGORY	A	B	C	D
① CIRCLING	660-1 612 (700-1)	720-1 672 (700-1)	NA	NA

REIL Rws 15 and 33 ①
MIRL Rwy 15-33 ①